

**WHITE
DWARF**



192

December
R.R.P. A\$9.95
NZ\$11.95

WHITE DWARF

GAMES WORKSHOP'S MONTHLY HOBBY MAGAZINE

IN THIS ISSUE

**WARHAMMER
CAMPAIGN**

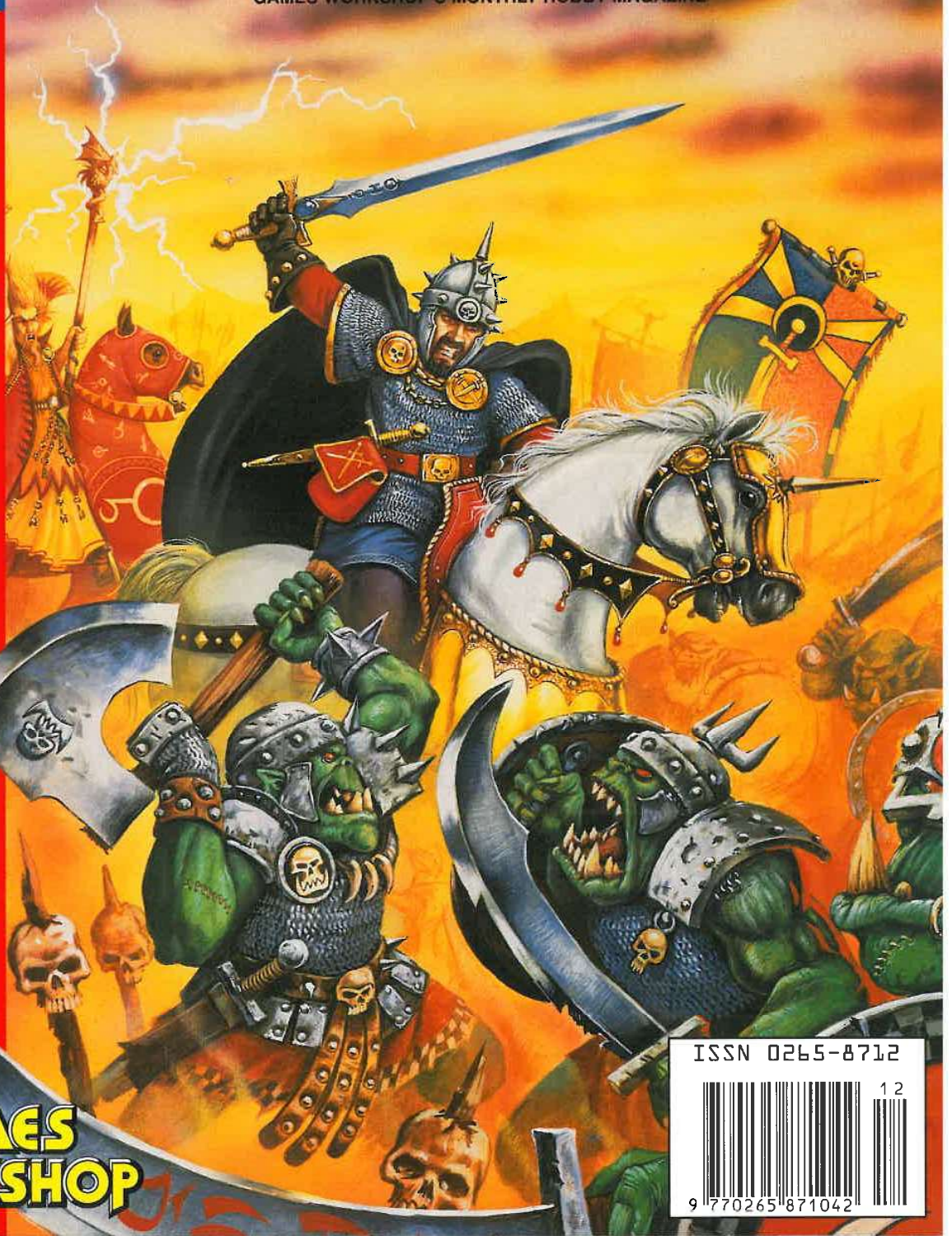
**NEW
ORK WARBIKE**

**SPECIAL
EPIC BATTLE
REPORT**

**WARHAMMER
BYTES BACK!
MINDSCAPE'S
NEW
COMPUTER
GAME**

**PLUS...
LETTERS,
INTERVIEWS
AND ALL THE
USUAL
MADNESS!**

**GAMES
WORKSHOP**



ISSN 0265-8712



9 770265 871042

Warhammer Quest

WITCH HUNTER



A COMPLETE WARRIOR EXPANSION SET FOR THE WARHAMMER QUEST GAME

Sworn to seek out evil at its source, the Witch Hunter metes out justice with his sabre and pistol. With his magic amulets the Witch Hunter can ward off the predations of Chaos, imbue himself with strength or banish the Warriors' fears. When such physical weapons are to no avail, he alone can defeat the hellspawn he faces with the power of his Faith.

In this Warrior pack, you'll find everything you need to play a Witch Hunter in your Warhammer Quest games, including a finely-sculpted Witch Hunter Citadel miniature by Gary Morley, a 20 page rulebook and full colour cards and counters.



Miniature supplied unpainted



The Witch Hunter Warrior pack is not a complete game.
You need a copy of Warhammer Quest to use the contents of this box.

WARNING! Some of the components in this boxed supplement contain lead which may be harmful if chewed or swallowed.
Citadel Miniatures are not recommended for children under 14 years of age.

Citadel, the Citadel castle, Games Workshop, the Games Workshop logo and Warhammer are registered trademarks of Games Workshop Ltd. Warhammer Quest is a trademark of Games Workshop Ltd. © Games Workshop Ltd, 1995. All rights reserved.

GAMES WORKSHOP

Warhammer Quest™

DUNGEON ADVENTURES IN THE WARHAMMER WORLD

INTO THE DEPTHS

By Gavin Thorpe and Andy Jones

“... good, solid Dwarf stone”, exclaimed Snorri Ironaxe approvingly as he noisily stomped down the tunnel. “Stay up for centuries this will, you mark my words!” There was an ominous rumble, a creak, and with a shower of dust the roof suddenly collapsed on top of the venerable Dwarf.

INFINITE VARIETY

Warhammer Quest's unique card and floorplan system means that every dungeon you explore, from its layout to its inhabitants, is different from the last. The cards and miniatures in the box provide enough adversaries for even the most glory-hungry Warrior. Add to this the enemies and new board sections from Lair of the Orc Lord and Catacombs of Terror, and the variety just keeps growing! Then there is the plethora of Warriors you can choose to play, and the blank Event card decks you can use to tailor your games to your Citadel collection. And it doesn't end there, oh no...

BROADEN YOUR HORIZONS

This is the latest in a series of articles showing how simple it is, with a bit of imagination, to expand and tailor your games of Warhammer Quest to the specific type of adventures you find most exciting. It deals with one of the most fundamental aspects of Warhammer Quest – the board sections. Even the simplest changes to the board sections can dramatically influence the way an adventure is played. In case you haven't seen the earlier articles, there is an issue guide to all the Warhammer Quest articles from previous White Dwarfs on the next page.

ARCANE ARCHITECTURE

Perhaps the simplest thing you can do to vary your adventures is to invent new rules for the board sections you already have. Take the Circle of Power, for example. Perhaps this Dungeon room has some kind of affect on magic users, allowing them to cast spells more easily, or increasing the effect of the spells they do cast? Alternatively, it could have a negative influence, drawing the winds of magic away from the Warriors and making it more difficult to cast spells. It could do this by reducing the Power roll or decreasing the effects of a spell. You could come up with special rules for the Guard Room so that the Warriors can check the barrels'

contents. They could find some beer, or maybe a foul Orcish brew – it's up to you to decide what's appropriate. You can even extend this to the Objective rooms. The Fire Chasm already has special rules, but do you think the Idol Chamber should rouse the Monsters to fanatical strength? Or perhaps the Tomb Chamber has some method of generating Undead creatures when the Power roll comes up as a one? There really is no limit to what you can do!



DESIGNER DUNGEONS

Even better than coming up with new rules for existing board sections, is coming up with new board sections themselves! If you're a budding Richard Wright (the artist who so magnificently captured the Warhammer Quest atmosphere on the floor plans in the box) you can design your own from scratch. Got an idea for a fantastic new Objective room? Well, go ahead and set to with the ol' paint and brushes! Although we plan to produce lots of new Warhammer Quest components over the coming issues, we could carry on for years without covering all the possibilities. Besides, only *you* know what would be your ultimate Dungeon room or Special Quest.

ADDING SPECIAL EFFECTS

If you're going to spend time creating your own board sections, you might as well sit down and think up some special rules to go along with them. There are only a few points to keep in mind when doing this, otherwise anything goes! Firstly, whatever you decide to do, you should relate it to the experience of your party. A trap which inflicts D6 Wounds is scary at Battle-level 1, but by the time Battle-level 10 Warriors reach it, it's just an annoyance. Secondly, the rules should have a purpose, either to challenge or aid the Warriors. Rooms with whirling scythes, crushing walls and descending ceilings should allow the Warriors a reasonable chance of escape – the more dire the consequences of failure, the more likely it should be that the Warriors get away in time. Certain death is not an option! Thirdly, the rewards should justify the risks. So, if you've come up with the lair of some monstrous beast, it should have a suitably impressive treasure hoard to guard. I'm sure you've got the idea by now.

On the other hand, magical shrines, hidden temples and other rooms which may heal or aid the Warriors should be brief respites from the horrors of the dungeon, rather than regular resting places which crop up all of the time. Of course, a room which can aid the Warriors, but at a price, is always fun. How about an ancient chapel which will provide healing, but only for a donation of gold or Treasure? The Warriors will have a hard decision to make, and they may never be sure they made the right one.

THE NEW CARDS

Featured on this issue's card sheets are three new board sections and the Dungeon cards to accompany them. You won't be able to get them anywhere else – they've been specially produced for White Dwarf! Each is relatively straightforward, but adds an interesting twist to the adventure. They also show you the kind of things you can do with new board sections.



COLLAPSED PASSAGE

There are no special rules attached to the Collapsed Passageway, it just forces the Warriors to think about who wants to be at the back! However, if you like, you could say that the Monsters favour the Collapsed Passage as an ambush site, and so any 'M' Event cards always represent the maximum number of Monsters shown (so 2D6 Orcs would always be 12 Orcs!).

WARHAMMER QUEST WHITE DWARF ARTICLES

ISSUE	TITLE	SUBJECT
184	WARHAMMER QUEST	Andy Jones' introduction to the Warhammer Quest hobby.
185*	MISSION IMPOSSIBLE	Introduces Special Quests and the Gaol board section and adventures.
186	FLAMES OF KHAZLA	Another Special Quest with six new adventures and board section.
187	LAIR OF THE ORC LORD	Discusses the Lair of the Orc Lord Adventure pack.
188	CREATURES OF DARKNESS	Shows how to use the Blank Event card decks to personalise your adventures for your own miniatures collection.
189*	THE DARKNESS BELOW	Gives ideas on how to alter the Dungeon deck and includes new Treasure cards and an Equipment card.
190	DARK SECRETS	Ideas about Warrior parties and eight new Dark Secret cards for you to use.
191	A HORROR AWAKENS	Campaign and adventures, showing how you can link adventures and create new ones with your existing Warhammer Quest collection.

*These issues both contain new rules for Hidden Passages.

INTO THE DARK

The Into The Dark card is accompanied by the spiral staircase board section. Imagine this board section is roughly divided into four squares around the stairwell itself (like the Gaol and Flames of Khazla board sections). The Warriors may either ignore the steps and skirt around the top, or they can descend downwards into the very bowels of the dungeon.



No Monsters will move onto the stairs, and whilst the Warriors are on this board section no Unexpected Events will occur. However, the area is saturated with dark sorcery and no Warrior may use any magic whilst at least one of their number remains on this board section.

The procedure for the spiral stair is simple to use, but is a bit difficult to put into words because it involves shuffling the cards around. Here goes. Once all the Warriors are on the stairs, roll a D6. Take that number of Dungeon cards from those not in play (either because they have already been used or are spare), not including Objective rooms. Now take the remaining Dungeon deck (those that represent the rooms ahead which haven't been explored yet) from the direction the Warriors were heading. Shuffle these and the spare cards into one pile and replace the unexplored Dungeon cards with the same number of cards from this new deck. The remaining cards in your hand are placed next to the stairwell, and represent the rooms down the spiralling stairs.

Example. The Warriors come across the spiral stair towards the end of their adventure. Behind them is a single T-Junction with four cards still unexplored. Two Dungeon cards remain ahead of them. Rolling a D6, the Warriors score a 5, and take five spare Dungeon cards. These are shuffled with the two ahead of them, giving a pile of seven in total. Two of these are dealt out to replace the cards they were heading for, while the remaining five represent the dungeon at the bottom of the stairwell. The cards by the T-Junction are not affected.

FURTHER MOVEMENT

If the Warriors decide to move on as normal, they must explore and move off the spiral stair just as with any other board section. If they descend into the depths, turn over the top card of the stairs' Dungeon deck and place the Warriors at the near end, as if they had started a new dungeon. Warriors can go back up the stairs by moving off the end of the board section. At the start of the next Warriors' phase place the Warrior model on the spiral staircase section.

THE PERILS OF THE DARK

The dungeon below the stairs is dangerous indeed, the very heart of the Monsters' domain. Whenever an Unexpected Event occurs while below the stairs, the Warriors should take D3 Event cards instead of just one (roll a D6, 1-2=1, 3-4=2, 5-6=3). Any 'E' type Events should be resolved before Monsters are placed on the board. Alternatively, if you are using the Monster tables from the Roleplay book, roll on the table one Battle-level higher than normal.

This board section forces the Warriors to make a hard choice. Firstly, they must consider where the Objective room is, and secondly, how strong they feel. It may turn out that they will have to head into the darkness to reach the Objective room regardless of their wishes, but nobody ever said life was fair...

DEAD END

The Warriors have come to a complete Dead End and must either retrace their steps or dig their way through the rubble. You cannot dig through while there are Monsters on the same board section.

HI HO, HI HO!

Up to two Warriors may dig through at any one time, and both must be standing at the collapsed end of the passage. For each turn a Warrior spends digging, roll a D6 and add their Strength. Keep a track of the score (or scores if more than one Warrior is digging). When the total reaches 30 or more the Warriors break through and may continue exploring as normal. However, if two Warriors are digging at the same time and both dice rolls come up the same (ie a double) then the roof collapses again and any work they have done is ruined - reduce their digging total by the score rather than adding it!

CUNNING MONSTERS

The Monsters that lurk within this dungeon know that bold Warriors frequently spend a lot of time near the Dead End. For this reason they regularly patrol the area and set traps to catch the unwary. The Dead End is a corridor, so only Unexpected Events will occur here. However, while a Warrior is standing on the Dead End board section a Power roll of 1 or 6 will trigger an Unexpected Event.



Warhammer Quest



In Warhammer Quest you take the part of a brave adventurer, exploring the danger-ridden catacombs that lie deep beneath the Old World, fighting hideous Monsters for fabulous treasures and undying glory. Further adventures are detailed in the Lair of the Orc Lord and Catacombs of Terror packs which introduce new Monsters and even more perils. In addition, the Warrior packs contain eight new heroes, each with unique special abilities, skills and weapons. Dare you face the challenge of Warhammer Quest?

WARNING! Adventure and Warrior packs contain lead which may be harmful if chewed or swallowed. Citadel Miniatures are not recommended for children under 14 years of age.

Citadel, the Citadel castle, Games Workshop, the Games Workshop logo and Warhammer are registered trademarks of Games Workshop Ltd. Warhammer Quest is a trademark of Games Workshop Ltd. © Games Workshop Ltd, 1995. All rights reserved.



GAMES WORKSHOP

ou these when w
'inal Clash, and
fought Raid!

MIES

le to fight the
d Goblins are

delines below.

restricted lists
that will make

arpies. As you

remember that

they can cause

oop types that

is a dangerous

Tanks is well

ts to the points

laid out in the

want to rewrite

ment.

os, and themed



YOUR NEW CARDS

To prepare your new Datafax, cards and floorplans, first remove these sheets from your magazine. Then, carefully cut around the individual cards. To make sure they're the right size, please cut around the front of your Dungeon cards. Enjoy your games!



VEHICLE 10 Points

SKRABBLA

This card may only be taken for Ork Warbikes. The rider of this Warbike has a faithful Grechlin assistant who rides on the back of the Warbike. These reckless Grechlin are known as Skrabblas. Following the shouted orders of the rider, they scramble around on the back, throwing their weight around to help ease the heavy Warbike into skid turns. A Warbike rider with a Skrabbla may add +2 to his dice rolls on the Skid turn chart. The Skrabbla is extremely agile and cannot be hit by enemy fire.

ORK WARBIKE ONLY

VEHICLE 10 Points

MOTO-X

This card may only be taken by Ork Warbikes. The Warbike has great big knobby tyres and special spiky tracks so that it can cope with all types of terrain. The Warbike can travel up to combat speed across difficult ground. In addition, the Warbike may attempt to cross linear obstacles that are no taller than the Warbike's front wheel. Roll a D6, on a 4, 5 or 6 the obstacle is successfully crossed, on a 1, 2 or 3 the Warbike collides as normal.

ORK WARBIKE ONLY

VEHICLE 5 Points

'OOOGE XHAUSTS

This card may only be taken for Ork Warbikes. The owner of this Warbike has fitted his bike with absolutely immense exhaust pipes. The 'Oooge Xhausts are specially customized to make as much noise as possible. The thumping noise they produce sounds like a dozen battle cannons ripping the earth apart, fooling the enemy into thinking they are under attack! Any enemy units on overwatch that are within 12" of the Warbike must pass a Leadership test or lose overwatch, just as if they had been shot at.

ORK WARBIKE ONLY

ORK WARBIKE

VEHICLE DATA

CREW:

ONE ORK RIDER

RAM VALUE:

STRENGTH 5

D4 DAMAGE

-2 SAVE

MOVEMENT:

SLOW SPEED: 8"

COMBAT SPEED: 12"

FAST SPEED: 30"

TYPE: BIKE

WEAPONS

The Warbike is armed with twin linked autocannons which fire forward with a 90° arc of fire.

WEAPON DATA

WEAPONS	RANGE	TO HIT	SAVE	ARMOUR	SPECIAL	
Autocannon	SHORT LONG	SHORT LONG	STR.	DAM.	MOD.	
	0-20	20-72	-	8	D6	-3
						2D6+8
						Sustained fire 2D



POINTS COST: 45 points

CUT THIS SIDE

D6	LOCATION	FRONT	ARMOUR	SIDE/REAR
1-2	Ork Rider	See Below		
3-6	Bike	10		12

Bike Damage Table

- 1 The Warbike's twin autocannon are destroyed and may no longer be used.
- 2 The Warbike's tracks are damaged. From now on the Warbike's maximum speed is reduced to its slow rate only.
- 3 The Warbike's controls are damaged making it difficult to control. Roll a D6 at the start of each of the Warbike's movement phases. On a roll of 4, 5 or 6 the driver is able to control the Warbike and it moves normally. On a roll of 1, 2 or 3 the bike moves out of control for that turn.
- 4 The Warbike's front wheel is blown off and it flips over, killing the rider. The wreck comes crashing to the ground D6" away in a random direction. Anybody under the Warbike when it lands takes D3 S6 hits with a -2 saving throw modifier.
- 5 The Warbike's engine explodes, killing the rider. The wreck hurtles out of control next turn before coming to a permanent halt.
- 6 The Warbike's fuel catches fire, killing the rider. The flaming wreck hurtles out of control next turn and then explodes, causing D3 Strength 8 hits with a -3 saving roll modifier on all models within 3".

Rider Damage Table

Roll to see if the rider is killed using the normal shooting rules. He has a Toughness of 4 and is wearing flak armour that confers a 6+ saving roll, and has 1 Wound. If the rider is killed then the Warbike will move out of control for the remainder of the game or until it hits terrain it cannot cross, collides with another vehicle or building, or it leaves the table.



ORK VEHICLE

ORK VEHICLE

ORK VEHICLE

ORK VEHICLE

CUT OTHER SIDE

TO REMOVE SHEET, CUT ALONG THIS DOTTED LINE



DEAD END

A rockfall blocks the tunnel ahead and there seems no obvious way deeper into the dungeon.

See White Dwarf 192 for details of the Dead End.



CORRIDOR

COLLAPSED PASSAGE

The walls of this passage have fallen in, forcing the Warriors to walk in single file.



CORRIDOR



CUT THIS SIDE



CUT OTHER SIDE